

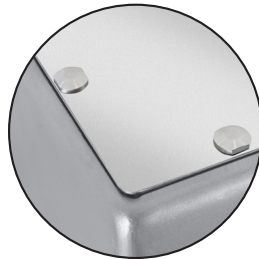


V100M Marine Food Mixer - 100 Quart Mixer

Project	Item Number	Quantity
-----	-----	-----



V100M Marine is built like a ship: To keep the water out – and to last for decades



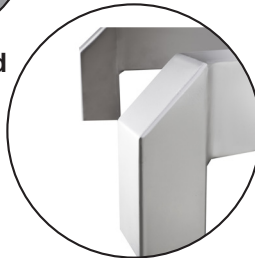
Rubber sealed cover



Secure cable



Hygiene in details



Waterproof legs



Unique ventilation cover

Standard Features

- Comply with USPHS requirements.
- IP44
- Powerful 4 hp motor for heavy duty use
- Variable Speed Drive with wide agitator speed range from 50 rpm to 250 rpm
- Power Bowl Lift
- Stainless steel construction and smooth surfaces for optimal hygiene
- Rubber sealed covers makes the mixer resistant to heavy cleaning.
- Unique ventilation cover prevents water from entering through ventilation grid
- Extra seal at cable lead-in prevents water from entering
- The machine has full welded stainless steel legs, which can be welded to the floor.
- Screws without slots ensure sanitation, and prevents bacteria collection
- Plastic bowl screen
- Front mounted controls with 90-minute timer with emergency stop
- No bowl adaptors required for the down-size bowls
- High torque transmission. Grease lubricated, anti friction ball bearings.
- Permanently lubricated planetary head
- Locking pin on tools instead of shaft.
- Safety cut-switch automatically turns the mixer off if bowl screen is opened or bowl lowered
- Overload protection and no voltage release
- Bowl truck with double wheel
- 6 foot cord

Optional Features

- Watertight stainless steel planetary head

Accessories:

- 100 quart bowl - stainless steel
- Dough hook - stainless steel and double pin
- Wire whip - stainless steel
- Aluminum flat beater
- 63 quart bowl and accessories
- 42 quart bowl and accessories
- Bowl scraper in 100, 63 and 42 quart sizes
- Stainless steel wing whip
- Stainless steel flat beater
- Reinforced whip
- Stainless steel splash guard
- Bowl guard ingredient chute

Warranty:

One year parts and labor limited warranty

Approved By: _____

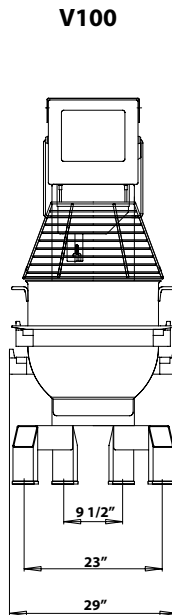
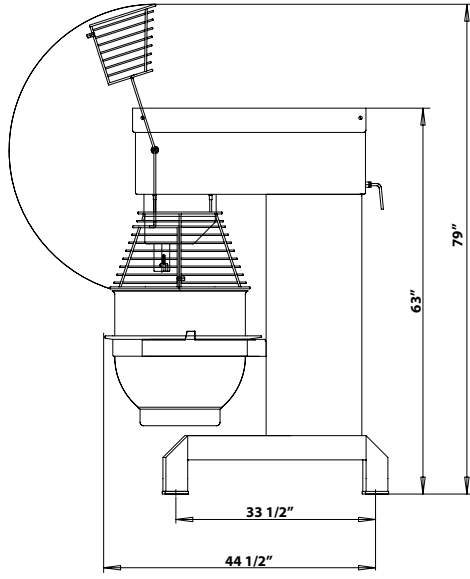
Date _____

 **Varimixer**
www.varimixerusa.com

14240 South Lakes Drive
 Charlotte, NC 28273
 Phone: 800-222-1138
 Fax: 704-583-1703
mixer@varimixerusa.com



V100M Marine Food Mixer - 100 Quart Mixer



Specifications

Model No.	Capacity	Overall size			Net. weight
		Height H	Width W	Length L	
V100M Marine	Large bowl 100 qt.	63" (160.02 cm)	29" (73.66 cm)	44 1/2" (113.03 cm)	870 lbs. (395 kg)
	Small bowl 63 qt. Small bowl 42 qt				

Shipping information

Class	CU. FT.	Dimensions			Weight
		Height	Width	Length	
85	73	78" (198.12 cm)	33" (83.82 cm)	49" (124.4cm)	981 lbs. (444.97 kg)

Cord & Plug	Attached 6 foot flexible 3-wire cord		
Electrical Data for Motor	Motor	Volts	Amp
Standard	4 HP	208/60/3	13
Optional	4 HP	440/60/3	6.7
Optional	4 HP	480/60/3	6.4
On the nominal motor voltage, + or - 10% tolerance is allowed.			
Mixing Speed			
Agitator Speed	Min	Max	
	50	250	

Capacity Chart

Mashed Potatoes	Whip or Beater	76 lbs.
Whipped Cream	Whip	20 Qts.
Muffins	Beater	125 lbs.
Layer Cake	Beater	125 lbs.
Pancake Batter	Whip or Beater	44 Qts
Cookie Dough	Beater or Hook	105 lbs.
Donuts, Yeast	Hook	150 lbs.
Donuts, Cake	Beater	140 lbs.
Bread Dough (65% AR)	Hook	155 lbs.
Pizza Dough (50% AR).....	Hook	135 lbs.

%AR= $\frac{\text{weight of water}}{\text{weight of flour}}$

Batch size and/or speed reduction is required if any of the following conditions exist.

1. High Gluten Flour
2. AR % under 40%
3. Water Temperature under 65 Degrees F.

Varimixer
www.varimixerusa.com

14240 South Lakes Drive
Charlotte, NC 28273
Phone: 800-222-1138
Fax: 704-583-1703
mixer@varimixerusa.com